

15 Weeroona Avenue Beachmere QLD

5 3 2

This is your chance to secure a grand and luxurious family home right in the heart of Beachmere. This spectacular 307sqm residence exudes contemporary elegance and style with five bedrooms, three bathrooms and a selection of sumptuous living spaces to choose from.

Double entry doors open to reveal a light-filled two-storey layout with the main floor offering a lounge and dining room plus an open-plan family room and a gourmet kitchen. From here, you can make your way outside to the covered alfresco and entertain guests as the kids explore the private backyard.

Yet another living space is perched on the upper level while all the bedrooms are expansive including the air-conditioned master with a walk-in robe and ensuite. Bedroom five is ideal for use as an office, for those who

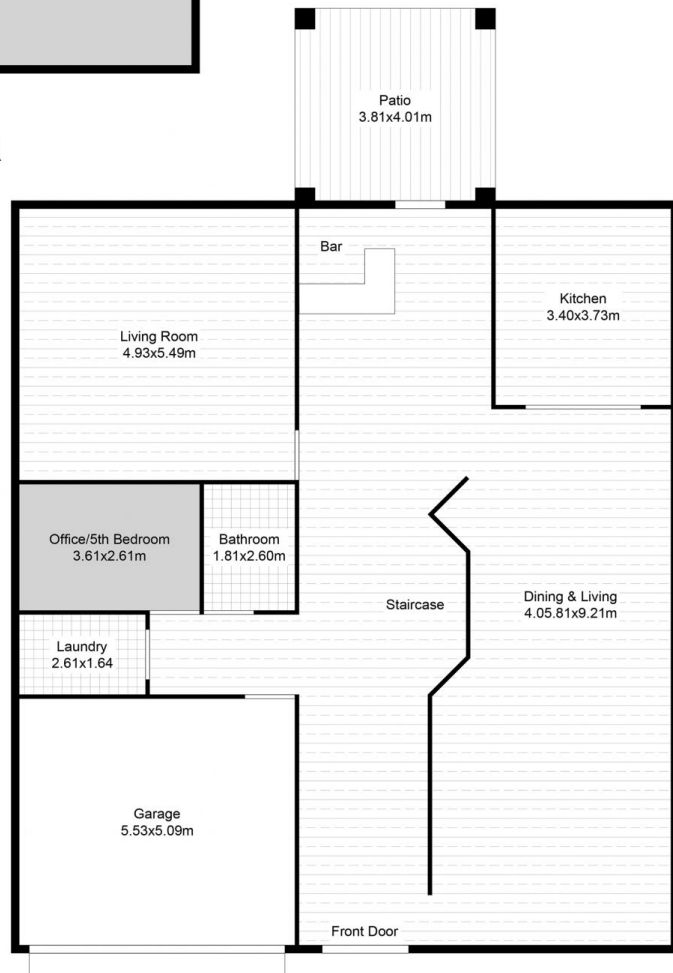
Price : \$ 920,000
Building Size : 307 sqm
Land Size : 607 sqm
View : <https://www.movementrealty.com.au/sale/qld/redcliffe-bribie-caboolture/beachmere/residential/house/6927550>



Selena Turner / Noonan
0438 435 712



TOP FLOOR



FIRST FLOOR

This floor plan including furniture, fixture measurements and dimensions are approximate and for illustrative purposes only. BoxBrownie.com gives no guarantee, warranty or representation as to the accuracy and layout. All enquiries must be directed to the agent, vendor or party representing this floor plan.

15 Weeroona Ave Beachmere