

## 2 Sutherland Crescent Morayfield QLD

3 1 2

This family home is situated on a large corner block within easy walking distance to Morayfield East State School. It is located only minutes from shops with close access to the Bruce Highway, this three-bedroom home is the perfect place to relax and unwind.

The property is well maintained and offers a comfortable owner-occupier or prospective rental income. The house itself features three bedrooms, one bathroom, and a two-car garage. There are fans throughout the bedrooms and lounge, with split system aircon in the main bedroom and lounge.

Featuring a spacious outdoor patio, perfect for relaxing or entertaining. The property features access to town water, sewerage, electric hot water, gas cooking and single side access. The remaining backyard boasts enough room for

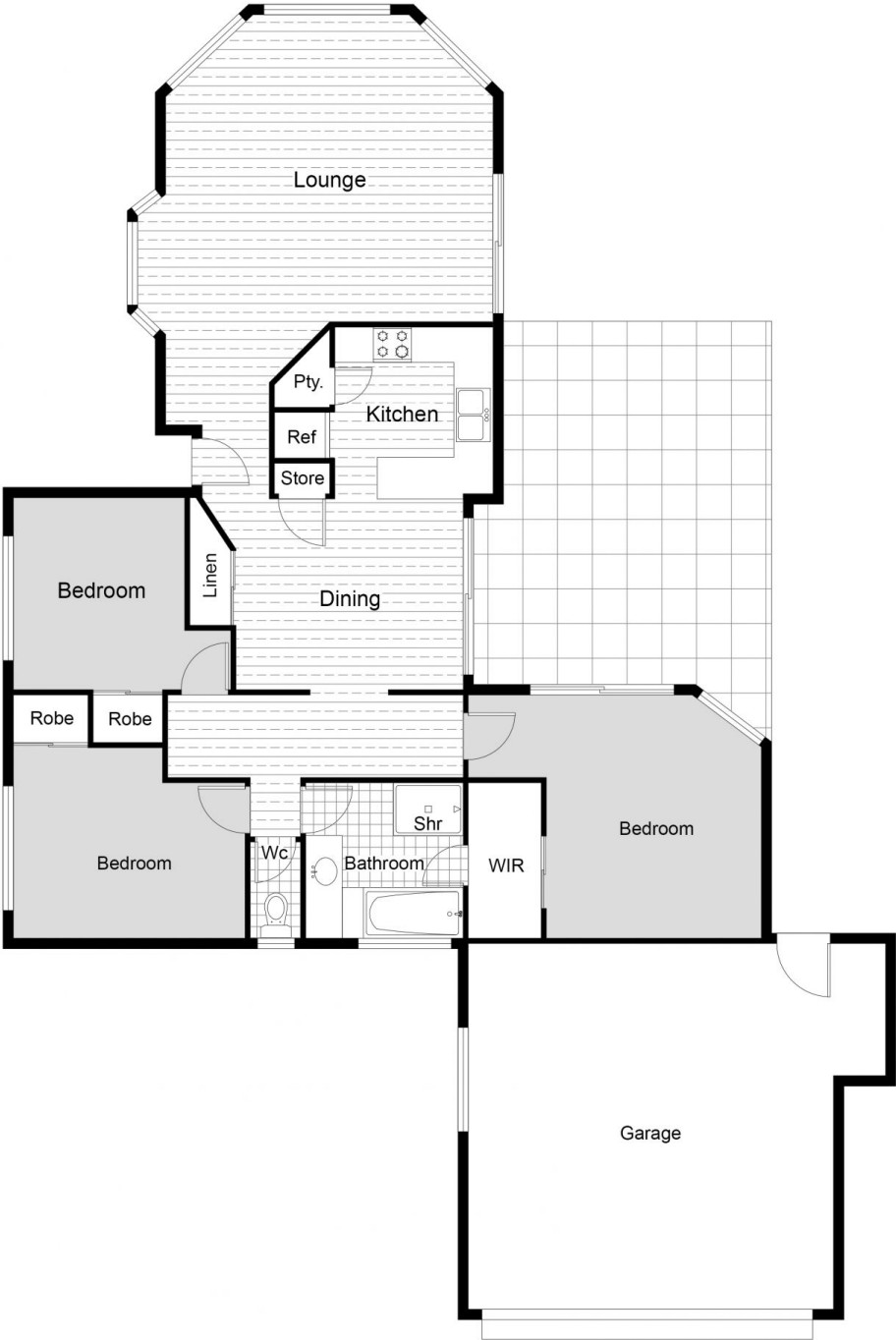
**Price** : \$ 567,000  
**Land Size** : 664 sqm  
**View** : <https://www.movementrealty.com.au/sale/ql/redcliffe-bribie-caboolture/morayfield/residential/house/6943457>



**Nakita Vonhoff**  
0401 722 569



**Adam Cini**  
07 5495 8001



FLOOR PLAN

This floor plan including furniture, fixture measurements and dimensions are approximate and for illustrative purposes only. BoxBrownie.com gives no guarantee, warranty or representation as to the accuracy and layout. All enquiries must be directed to the agent, vendor or party representing this floor plan.

2 Sutherland Cres, Morayfield