



27 Vanillalily Close Banksia Beach QLD

4 2 2

Amy Huxtable at Movement Realty presents 27 Vanillalily Close Banksia Beach. Nestled within the prestigious Pacific Harbour Golf Course Estate, this magnificent luxury lowset home offers a refined living experience on a generously sized 800 m² block with an impressive 20-metre frontage along the golf course. Situated in a peaceful cul-de-sac, this residence boasts panoramic vistas of the 1st fairway, making it an exceptional find for avid golf enthusiasts and those seeking tranquility in an upscale setting.

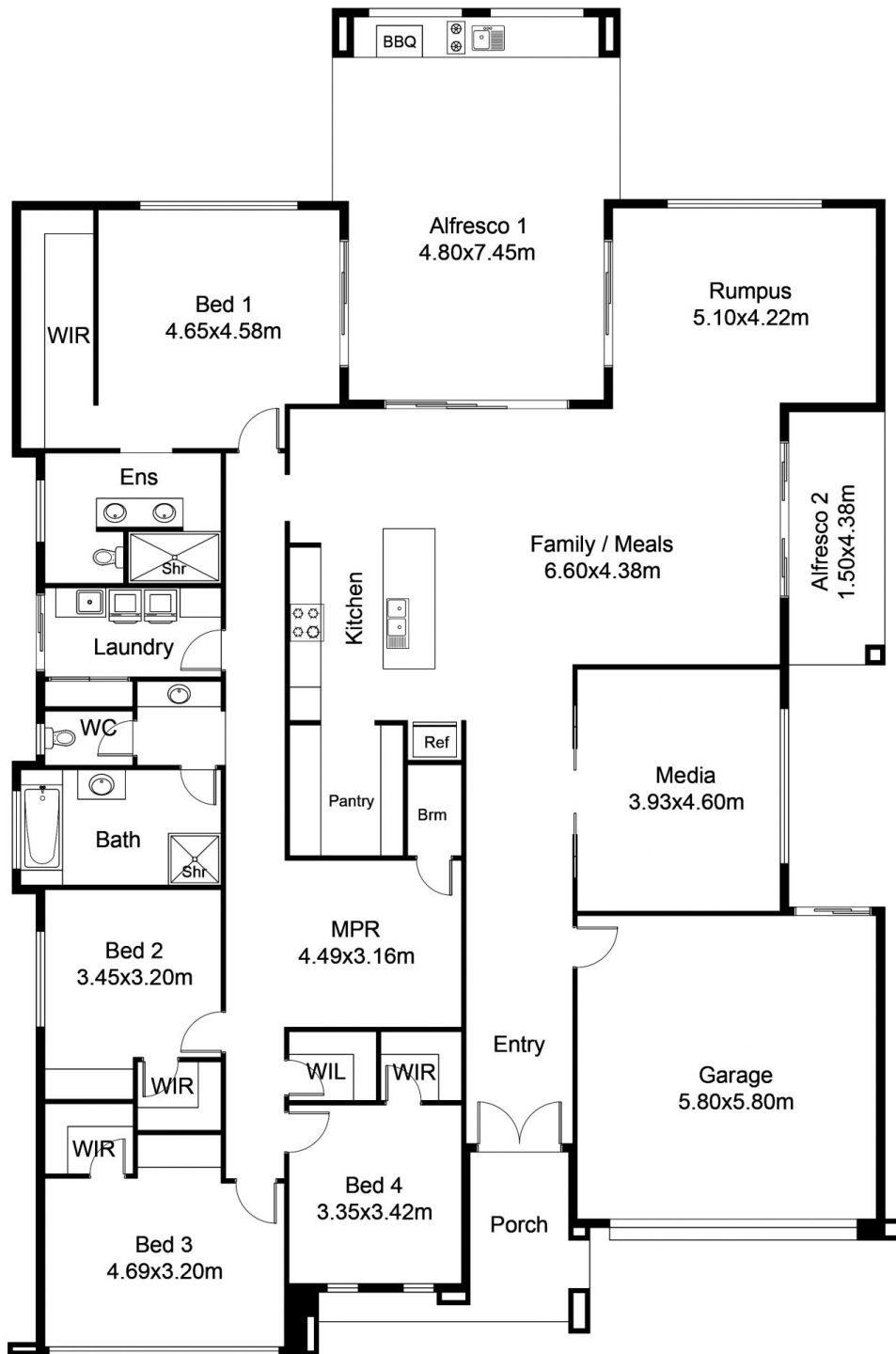
Price : \$ 1,350,000
Building Size : 361 sqm
Land Size : 800 sqm
View : <https://www.movementrealty.com.au/sale/qld/redcliffe-bribie-caboolture/banksia-beach/residential/house/7718575>

Property Highlights:

Panoramic Golf Course Views: Enjoy the ever-changing beauty of the 1st fairway from the comfort of your home. The spacious living areas and master bedroom offer stunning views that seamlessly blend the lush golf course with the tranquil lagoon.



Amy Huxtable
07 5495 8001



FLOOR PLAN

This floor plan including furniture, fixture measurements and dimensions are approximate and for illustrative purposes only. BoxBrownie.com gives no guarantee, warranty or representation as to the accuracy and layout. All enquiries must be directed to the agent, vendor or party representing this floor plan.

27 Vanillialily Close Banksia Beach