



**34 Moatah Drive Beachmere QLD**

2 1 3

Are you ready to transform this diamond in the rough into your dream home? Nestled in peaceful Beachmere, this two-bedroom property is a renovator's paradise, offering endless possibilities to put your own style into it.

**Features:**

2 Bedrooms, Master with BIR  
Modern Bathroom & separate toilet  
Well-Appointed Kitchen: Loads of storage space and electric cooking appliances  
Spacious Lounge Room: A blank slate for your design ideas  
Reverse Cycle Air-Conditioning: Year-round comfort at your fingertips

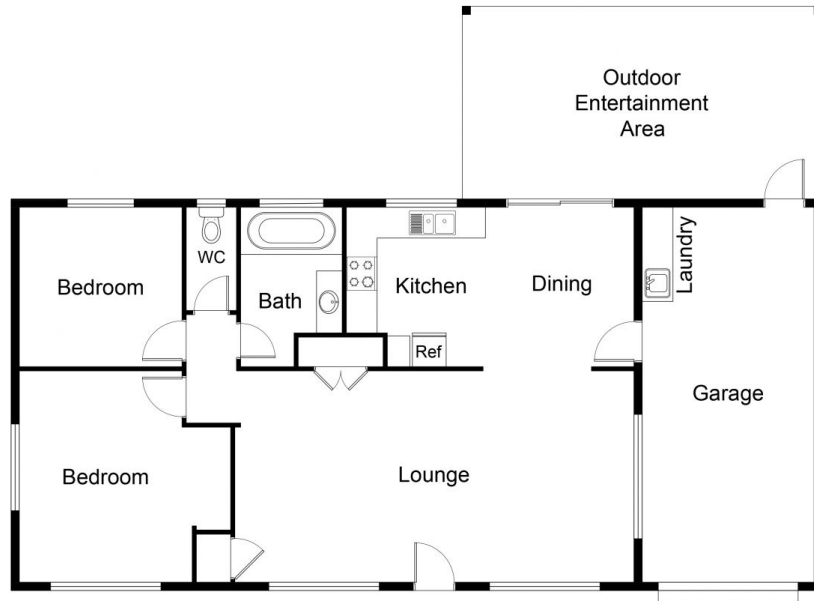
**Exterior Features:**

Enclosed Outdoor Entertaining Area: Create your private

**Price** : \$ 525,000  
**Land Size** : 640 sqm  
**View** : <https://www.movementrealty.com.au/sale/ql/redcliffe-bribie-caboolture/beachmere/residential/house/7767659>



**Amy Huxtable**  
**07 5495 8001**



## FLOOR PLAN

This floor plan including furniture, fixture measurements and dimensions are approximate and for illustrative purposes only.  
BoxBrownie.com gives no guarantee, warranty or representation as to the accuracy and layout.  
All enquiries must be directed to the agent, vendor or party representing this floor plan.

**34 Moatah Drive Beachmere**