



**18 Dorunda Avenue Beachmere QLD**

4 2 2

\*\*\*\*Please note access property via Peel Rd due to Road Works

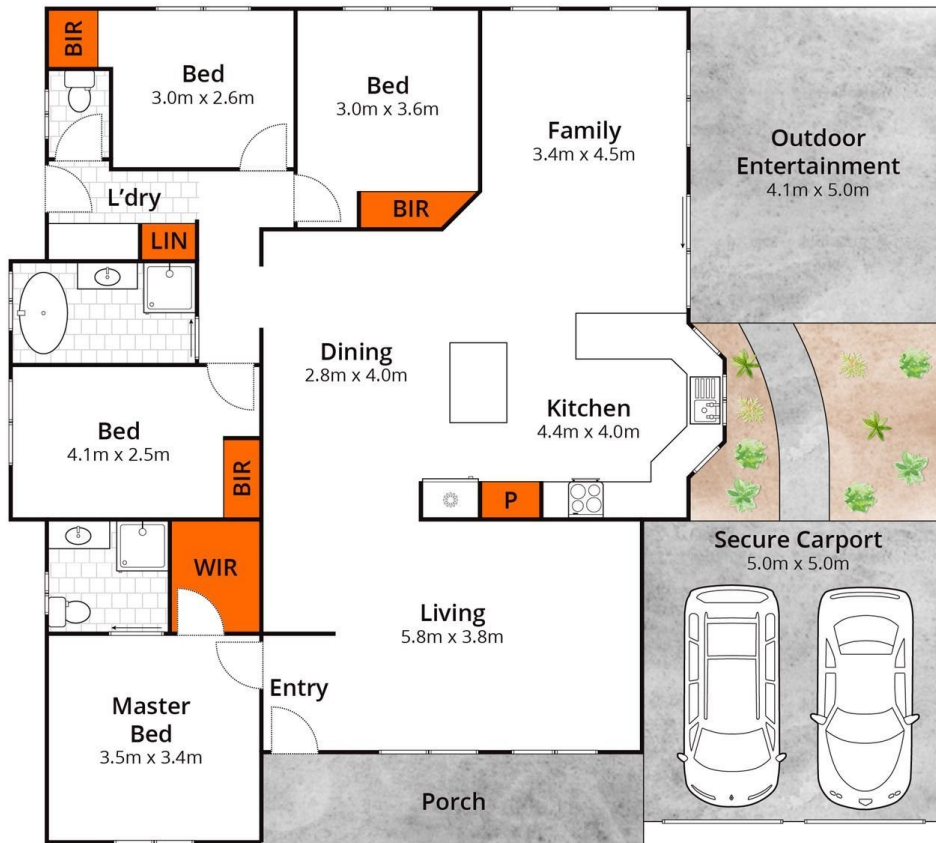
**View** : <https://www.movementrealty.com.au/sale/qld/red-cliffe-bribie-caboolture/beachmere/residential/house/7846034>

Welcome to your future family haven! Nestled in the heart of Beachmere, this delightful home invites you to create lasting memories and embrace a relaxed coastal lifestyle.

The heart of the home is a harmonious open-plan kitchen where you can indulge your culinary passions in the new and generously spaced kitchen, equipped for the at-home chef's culinary adventures. The layout seamlessly flows into a designated dining area, making family meals and gatherings a breeze. A second lounge area offers additional flexibility for entertainment or relaxation.



**Selena Turner-Noonan**  
**0438 435 712**



Approx House Area 136m<sup>2</sup>

Whilst [bwrn.com.au](http://bwrn.com.au) has made every attempt to ensure the accuracy of the floor plan contained here, measurements are approximate and no responsibility is taken for any error, omission, or mis-statement. This plan is for illustrative purposes only.

**18 Dorunda Avenue, Beachmere**

**MOVEMENT**  
REALTY