



77 Seaside Drive Banksia Beach QLD

4 3 4

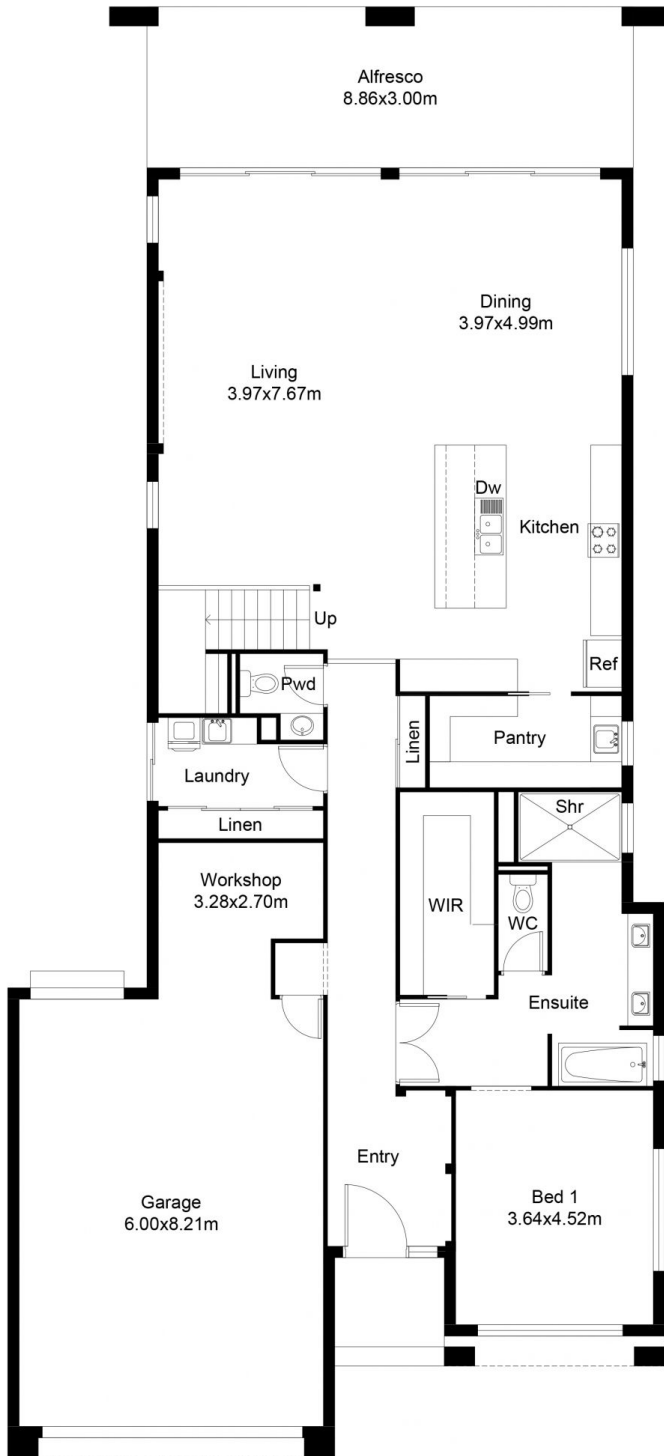
Amy Huxtable at Movement Realty proudly presents 77 Seaside Drive, Banksia Beach. Indulge in the pinnacle of coastal living at The Pandora, a contemporary marvel meticulously custom crafted by Mancorp. Situated in the most coveted address on Bribie Island, this residence offers a sprawling 453 square metres of true opulence with direct ocean access through the Pumicestone Passage.

Price : CONTACT AGENT FOR PRICE
Building Size : 453 sqm
Land Size : 599 sqm
View : <https://www.movementrealty.com.au/sale/qld/redcliffe-bribie-caboolture/banksia-beach/residential/house/7933993>

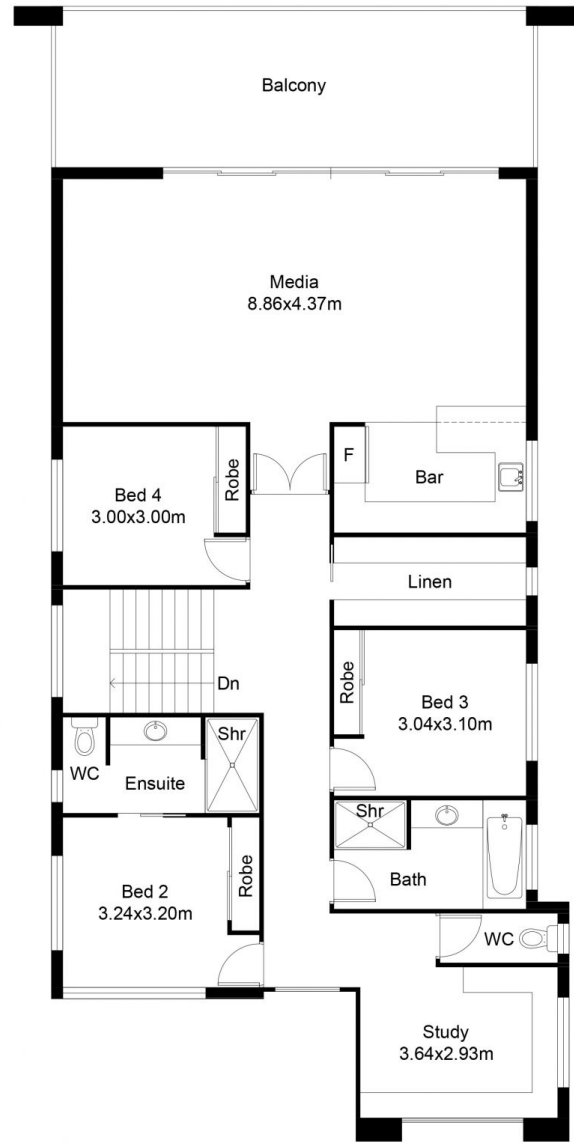
The entrance sets the tone with grandeur, featuring tiled flooring and a lofty 2.7-metre ceiling adorned with exquisite cornice detailing. Step through double timber doors into the master suite, where marble-tiled flooring leads to a spacious walk-in robe. The master ensuite is a sanctuary in itself, boasting a double shower (rain shower & handheld) bathtub, dual vanity basins, and separate toilet-all enveloped in floor-to-ceiling tiles.



Amy Huxtable
07 5495 8001



GROUND FLOOR



FIRST FLOOR