



### 18 Parkway Crescent Caboolture QLD

3 2 2

Movement Realty proudly presents 18 Parkway Crescent, Caboolture.

Nestled in the highly sought-after Reserve Estate directly across the road from the beautiful parklands, this quality home, constructed in 2013, exudes immaculate upkeep and offers a low-maintenance lifestyle on a generous 453m<sup>2</sup> block. Boasting a functional layout, the property comprises 3 bedrooms, 1 study, 2 bathrooms, split system air-conditioning, and a stunning kitchen equipped with a remarkable gas cooktop. The spacious living and dining area seamlessly extends through double doors to the serene alfresco space boasting beautiful established tranquil gardens.

For potential investors, this property currently offers an attractive rental potential in the vicinity of \$600 per week.

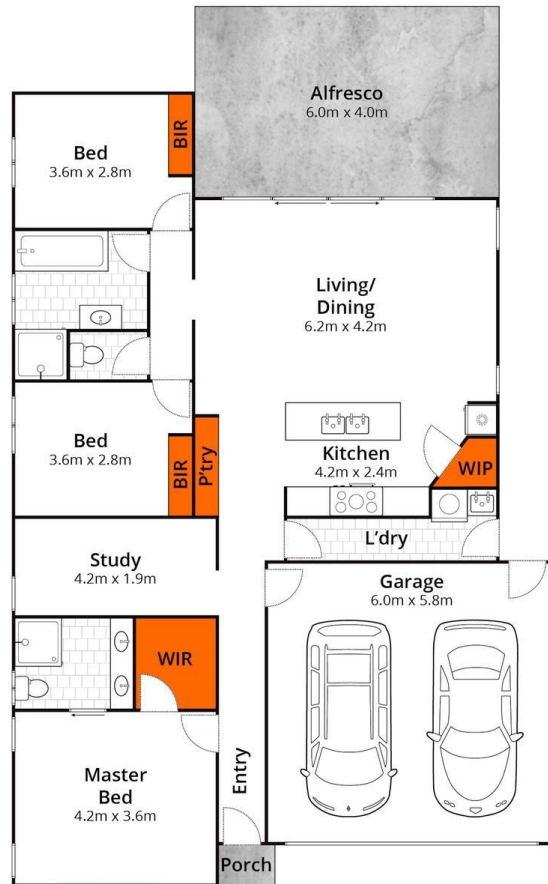
**Price** : SOLD  
**Building Size** : 154 sqm  
**Land Size** : 453 sqm  
**View** : <https://www.movementrealty.com.au/sale/qld/redcliffe-bribie-caboolture/caboolture/residential/house/7936877>



**Nakita Vonhoff**  
0401 722 569



**Demi Low**  
07 5495 8001



Approx. Area 154m<sup>2</sup>

Whilst [bwrm.com.au](http://bwrm.com.au) has made every attempt to ensure the accuracy of the floor plan contained here, measurements are approximate and no responsibility is taken for any error, omission, or mis-statement. This plan is for illustrative purposes only.

**18 Parkway Crescent, Caboolture**

**MOVEMENT**  
REALTY