



### 5 Charles Crescent Beachmere QLD

3 1 2

Nestled in the heart of Beachmere, this charming two-story residence is tucked away in a tranquil cul-de-sac. Boasting three bedrooms upstairs alongside a well-appointed bathroom, the open plan living and dining areas seamlessly flow, leading to a spacious deck overlooking the expansive backyard. Whether you're stepping onto the front or rear verandas, you'll find perfect spots for relaxation and unwinding amidst the serene surroundings.

Downstairs, discover a versatile space ideal for teenage retreat, featuring two rooms, a comfortable lounge, a functional kitchen, a bathroom, and a convenient study nook.

Spanning a generous 1006m2 block, this property offers ample space for recreational activities and potential development opportunities, including the option for a

**Price** : NEW LISTING!!!!  
**Land Size** : 1006 sqm  
**View** : <https://www.movementrealty.com.au/sale/ql/redcliffe-bribie-caboolture/beachmere/residential/house/7972448>



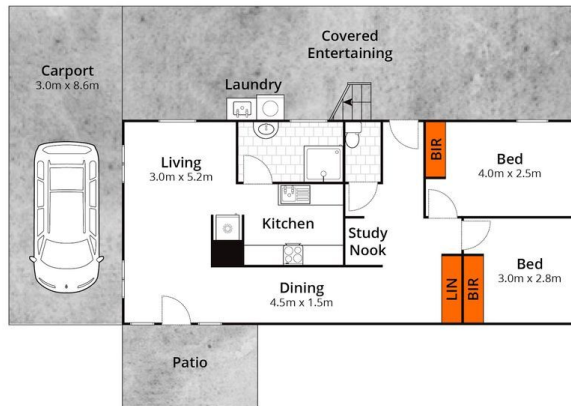
**Nakita Vonhoff**  
0401 722 569



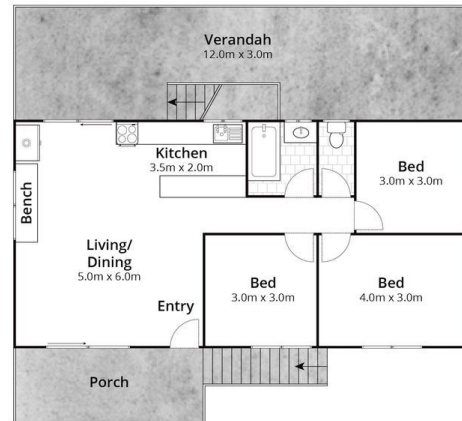
**Selena Turner-Noonan**  
0438 435 712



(Not In Position)



Lower Floor



Upper Floor

Approx House Area 141m<sup>2</sup>

Whilst [bwrn.com.au](http://bwrn.com.au) has made every attempt to ensure the accuracy of the floor plan contained here, measurements are approximate and no responsibility is taken for any error, omission, or mis-statement. This plan is for illustrative purposes only.

## 5 Charles Crescent, Beachmere

**MOVEMENT**  
REALTY