



6-8 Whiting Street Beachmere QLD

4 2 2

Discover the perfect family home at 6-8 Whiting Street, Beachmere, set on a sprawling 1308m² block. This well-appointed 4-bedroom, 2-bathroom residence offers ample space for both relaxation and entertainment. With multiple living areas, there's room for everyone to unwind or gather as a family. The spacious parents' retreat provides a private sanctuary, while the large outdoor patio is ideal for hosting barbecues or simply enjoying the serenity of the outdoors.

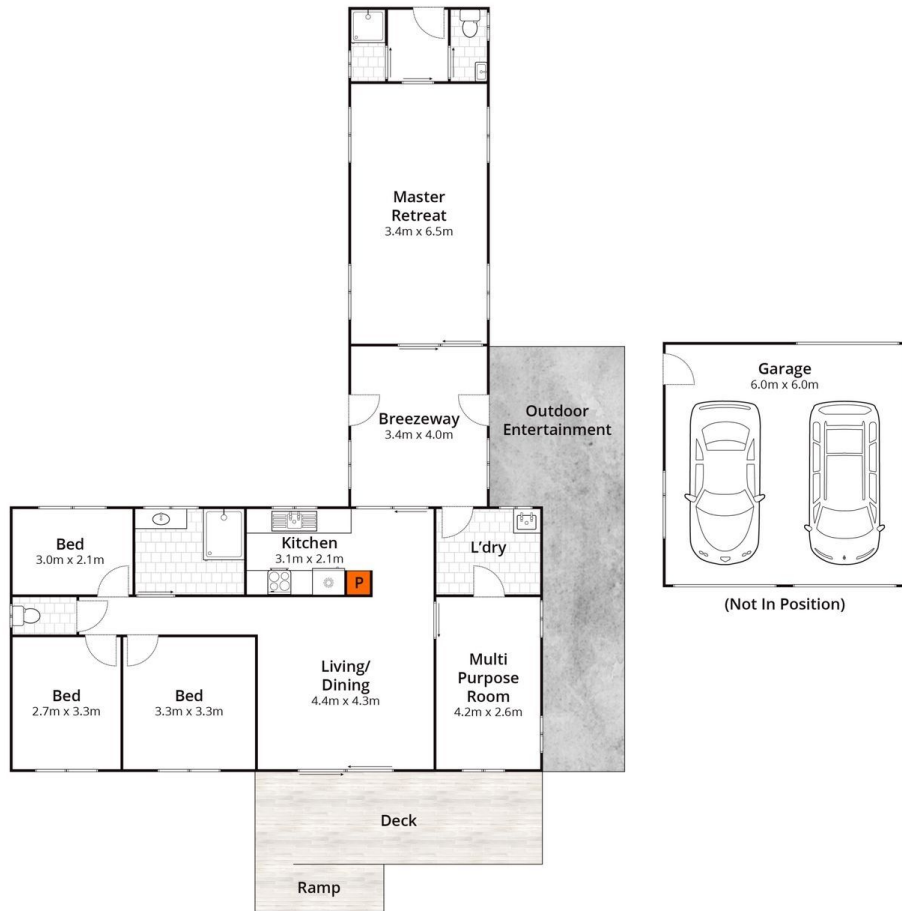
The property's fully fenced yard with side access ensures a safe environment for children and pets, and the fenced-off courtyard adds an extra layer of security and versatility. Designed with accessibility in mind, the home features wheelchair access throughout, including a renovated

Type : House
Price : NEW LISTING
Land Size : 1308 sqm
View : <https://www.movementrealty.com.au/sale/ql/redcliffe-bribie-caboolture/beachmere/residential/house/8121755>



Nakita Vonhoff
0401 722 569

[For full version visit the website](https://www.movementrealty.com.au)



Approx House Area 130m²

Whilst bwrn.com.au has made every attempt to ensure the accuracy of the floor plan contained here, measurements are approximate and no responsibility is taken for any error, omission, or mis-statement. This plan is for illustrative purposes only.

6-8 Whitting Street, Beachmere

MOVEMENT
REALTY