



6 Anemone Close Caboolture QLD

4 2 2

Discover this modern masterpiece, built in 2021, and nestled in the prestigious Central Springs Estate. This 4-bedroom family home offers the perfect blend of style, comfort, and functionality on a generous 622m2 block. With a gorgeous pool and luxurious indoor-outdoor living, this home is a standout in Caboolture's most sought-after community.

Type : House
Price : UNDER CONTRACT
Land Size : 622 sqm
View : <https://www.movementrealty.com.au/sale/ql/redcliffe-bribie-caboolture/caboolture/residential/house/8131287>

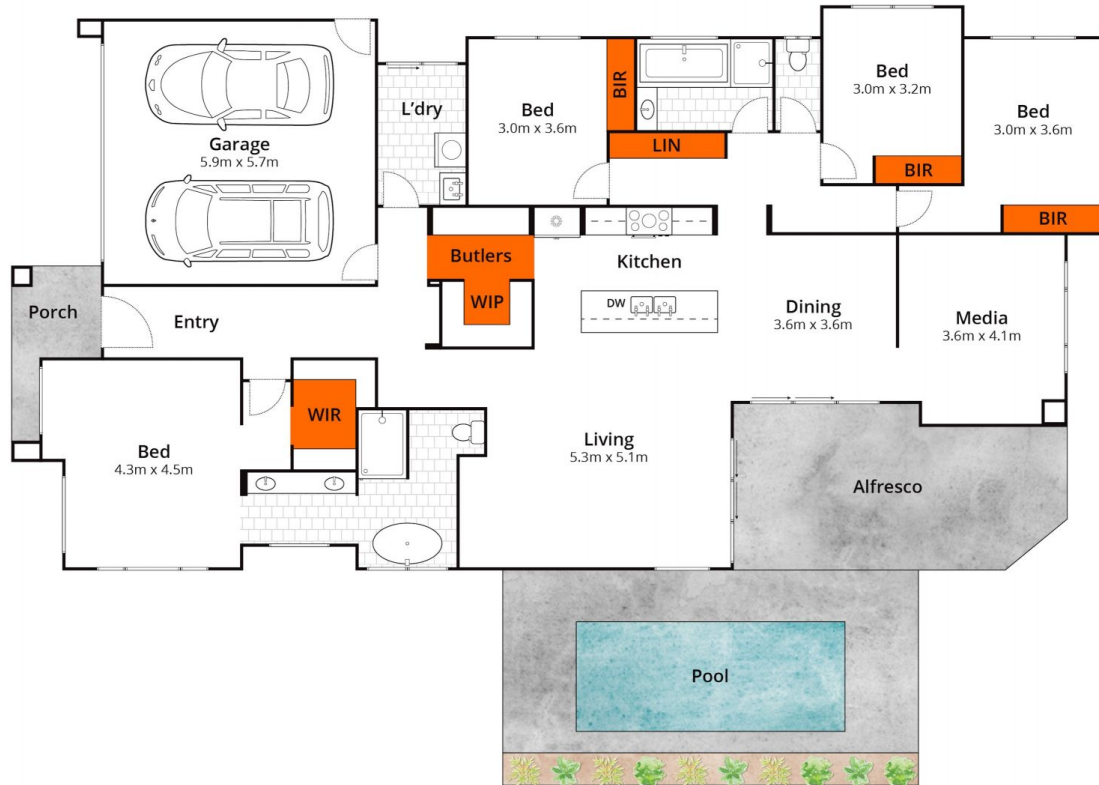
Property Highlights:

- 4 generous carpeted bedrooms with built-in robes and ceiling fans
- Master bedroom with walk in robe and beautifully designed bathroom with feature window
- Luxurious master suite with a walk-in robe and private ensuite

[For full version visit the website](#)



Adam Cini and Tiffany Warren
0497807087



Approx House Area 237m²

Whilst bwrn.com.au has made every attempt to ensure the accuracy of the floor plan contained here, measurements are approximate and no responsibility is taken for any error, omission, or mis-statement. This plan is for illustrative purposes only.

6 Anemone Close, Caboolture

MOVEMENT
REALTY